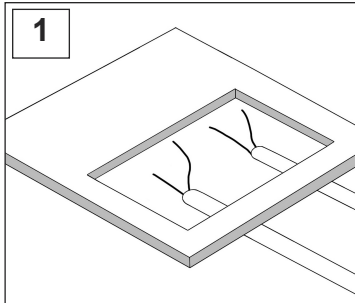


# WFB244X Floor Box

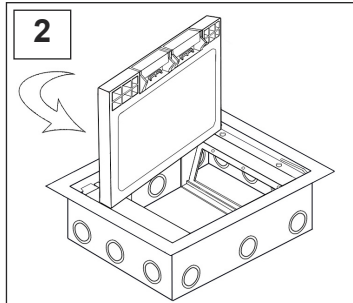
## -Installation instructions-

For carpeted floors only



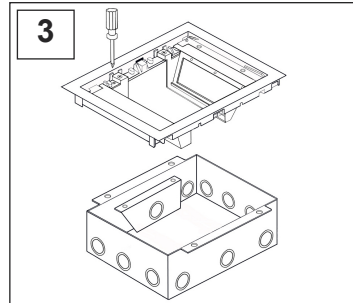
1

Determine floor box location. Cut an opening on the mounting surface (8 3/16 x 10 7/16 In.) Keep the removed carpet insert in a safe place to install later on the Lid. Max Wood Thickness 1"



2

Remove lid and frame to increase installer's flexibility. To remove lid from frame open lid and pull left side until the notch is released from the frame.



3

Unscrew the 4 silver screws to separate flange/frame and angled panels from the box.



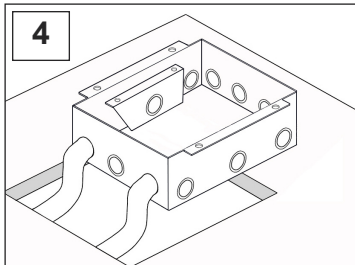
### Warning:

To be installed and/or used in accordance with appropriate electrical codes and regulations.



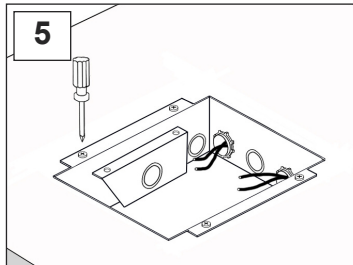
### Warning:

To avoid fire, electrical shock and/or electrocution turn power OFF at the circuit breaker before wiring.



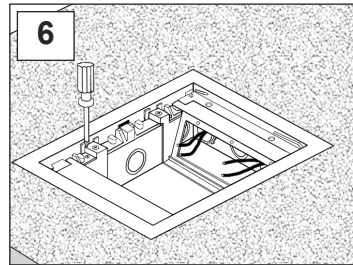
4

Extend flexible conduit (1/2" or 3/4") through panel cut out. Remove appropriate knockout from box and attach the conduits.



5

Insert box to mounting hole. Make sure that box brackets (ears) lay on wood floor below the carpet. Use wood screws (supplied) to secure box brackets to floor.



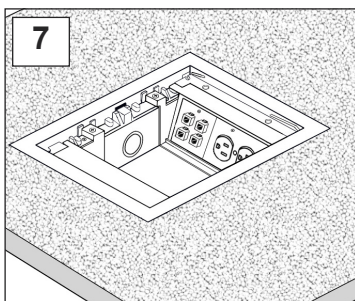
6

Install flange/frame back in place. Make sure it rests on top of the carpet. See Fig. A and Fig. B.



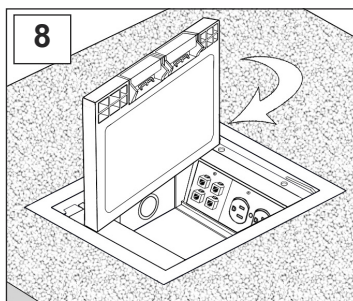
### Caution:

Wire devices in accordance with the NEC. If you are not sure about existing conductor wires, color coding, polarity and circuit feed contact a licensed electrician.



7

Wire devices in accordance with the NEC. Attach faceplates to mounting chassis. Barriers (supplied) must be installed when placing line and low voltage devices on the same side of the box.



8

Attach cover to frame/trim. -Place notch at right side into corresponding hole in frame/trim. -Push left side of lid until left side notch reaches end position.

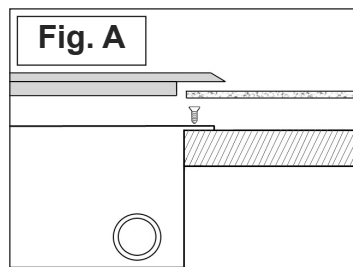


Fig. A

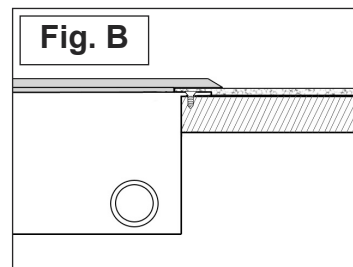


Fig. B

**DISCLAIMER - (Worldwide)** FBS FLOOR BOX SYSTEMS MAKE NO WARRANTIES OR REPRESENTATIONS, WHATSOEVER, EXPRESS OR IMPLIED, AS TO THE MERCHANTABILITY, FITNESS OR SUITABILITY OF THIS PRODUCT.

Installer/Buyer of this product must verify the suitability or approval of this product for the specific use with the local codes and/or authorities having jurisdiction in the area where the product will be installed.

### NOTE: Recessed space on the top of the cover for floor covering inserts.

Adjustable Depth - 3/16" (5 mm) for carpet installation or the supplemental spacers may be removed to increase the depth to 7/16" (11 mm) for other floor thicknesses.

