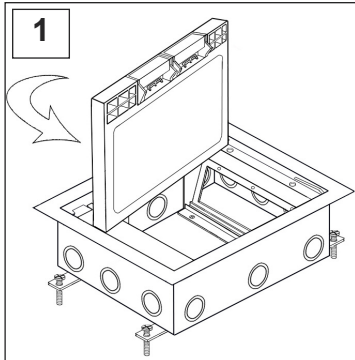
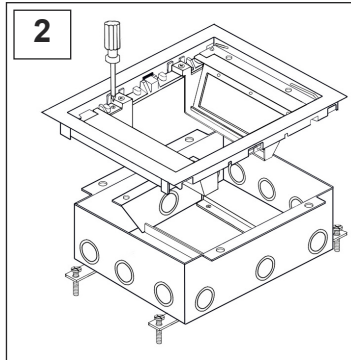


PMC50X Floor Box -Installation Guide-



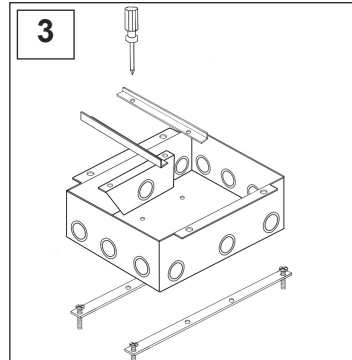
1

Remove lid and frame to increase installer's flexibility. To remove lid from frame open lid and pull left side until the notch is released from frame.



2

Unscrew the four silver screws to separate the flange/frame and the angled panels from the box.



3

New Work: Continue to next step.
Old Work: Unscrew the four screws at the bottom of the box to remove leveling feet.



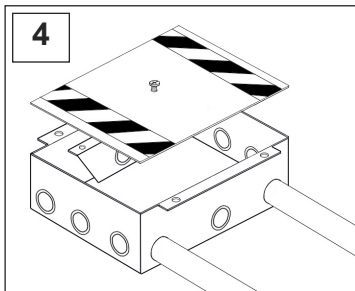
Warning:

To be installed and/or used in accordance with appropriate electrical codes and regulations.



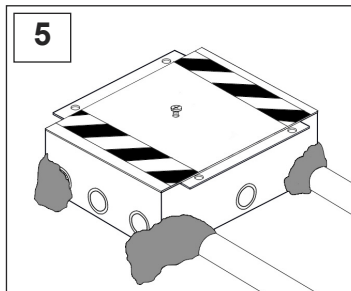
Warning:

To avoid fire, electrical shock and/or electrocution turn power OFF at the circuit breaker before wiring.



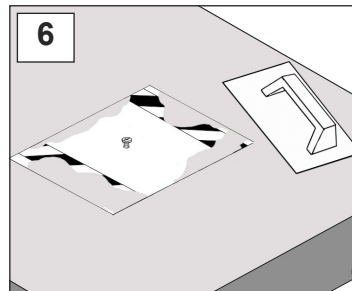
4

Determine box location and position in accordance to floor plans. Attach required conduits to knockouts. Install temporary cover to prevent debris from entering the box during concrete pour. Duct tape any cracks or seams where concrete may enter.



5

Old work: Place the box into the concrete hole and add concrete mixture as needed until desired floor box level is met.
New Work: Adjust leveling screws until desired level is met. Fix the box to the floor using concrete mix prior to pouring concrete.



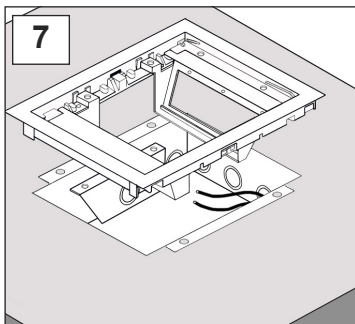
6

Hand towel near the box edges is suggested once pour process is complete. Once Concrete has cured, remove temporary cover.



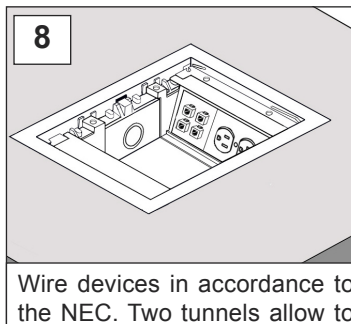
Caution:

Wire devices in accordance with the NEC. If you are not sure about existing conductor wires, color coding, polarity and circuit feed contact a licensed electrician.



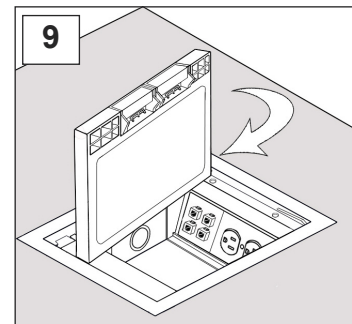
7

Locate and pull the wires. Install the flange/frame back in place.



8

Wire devices in accordance to the NEC. Two tunnels allow to feed the opposite wiring compartment. Attach faceplates to mounting chassis. Barriers (supplied) must be installed when placing line and low voltage devices on the same side of the box.



9

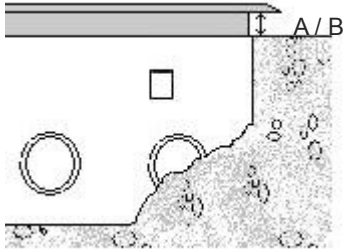
Attach cover to frame/trim.
-Place notch at right side into corresponding hole in frame/trim.
- Push left side of lid until left side notch reaches end position.

DISCLAIMER - (Worldwide)
FBS FLOOR BOX SYSTEMS MAKE NO WARRANTIES OR REPRESENTATIONS, WHATSOEVER, EXPRESS OR IMPLIED, AS TO THE MERCHANTABILITY, FITNESS OR SUITABILITY OF THIS PRODUCT.

Installer/Buyer of this product must verify the suitability or approval of this product for the specific use with the local codes and/or authorities having jurisdiction in the area where the product will be installed.

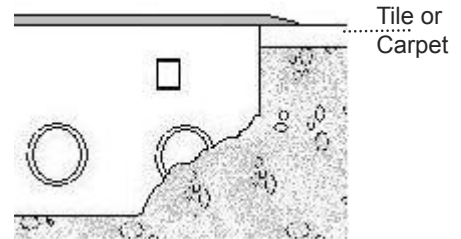


Fig. A - IMPORTANT

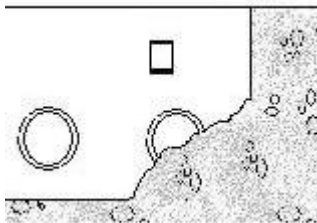


A: Maximum Adjustment: 0.25" with supplied tighten screws
B: Maximum Adjustment: 0.75" with longer screws (not supplied)
In case concrete is flushed with box, the above mentioned adjustments for tile or carpet covering are possible.

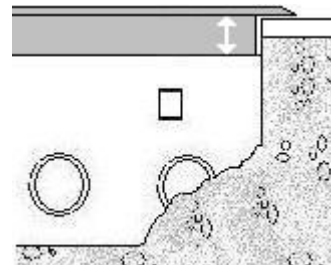
CORRECT



When a floor covering thickness is known in advance (tile, wood, carpet), estimating level to obtain a floor covering flushed with floor box is suggested (as shown on above fig.) However it is not completely necessary, as described in fig A

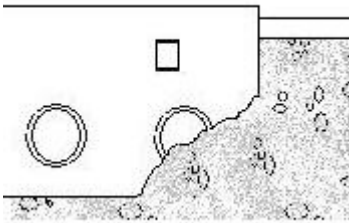


When concrete is flushed with box, frame can be applied; allowing a 0.25" adjustment for floor covering (with supplied screws) or 0.75" using longer screws (not supplied). See Fig A



When concrete is over poured frame/trim can still be applied. Note that over poured concrete and floor cover should not exceed 0.75" above the box level.

*****INCORRECT*****



Avoid this situation

NOTE: Recessed space on the top of the cover for carpet inserts.

Adjustable Depth - 3/16" (5 mm) for carpet installation or the supplemental spacers may be removed to increase the depth to 7/16" (11 mm) for other floor thicknesses.

