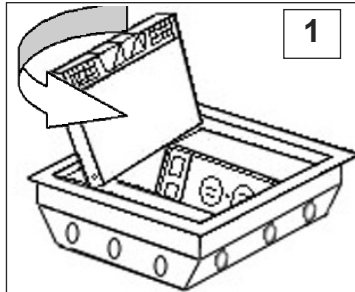
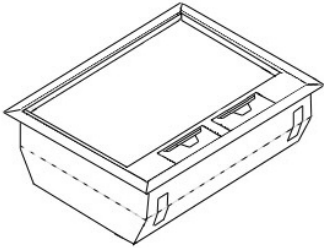


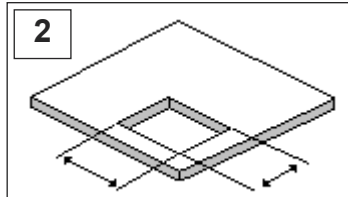
-Installation Instructions-

IMPORTANT:

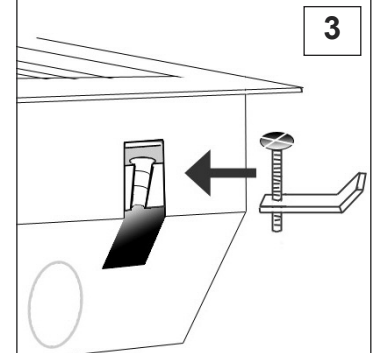
Please read carefully the following instructions before beginning.



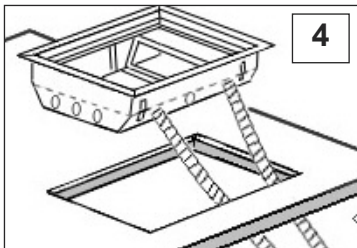
Remove lid and frame to increase installer's flexibility. To remove lid from frame open lid and pull left side until released from frame.



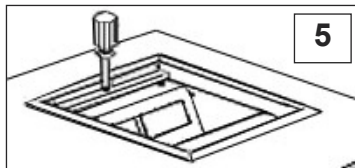
Determine box location and position in accordance to floor plans.



Push locking toggle and screw into each screw opening (located at all four corners) until toggle snaps into place.

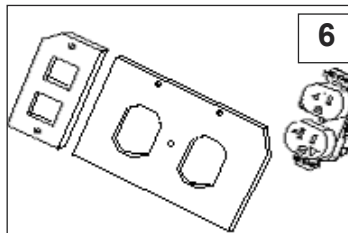


Remove appropriate knock-out and attach conduit connector. Extend flexible conduit through panel cut out. Attach a conduit connector to conduit.

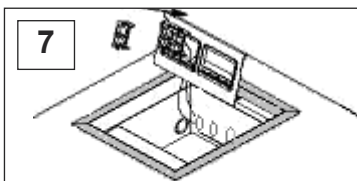


Insert box to mounting hole and adjust toggles to the panel by tightening locking screws. (See Fig A below)

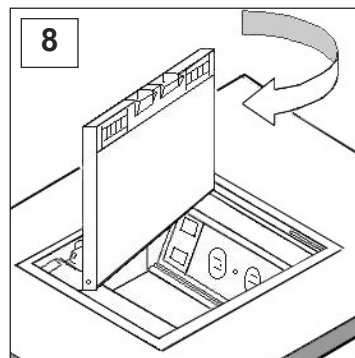
Locate and pull wires.



Attach power outlets and data devices to the corresponding mounting plates.



Wire devices in accordance with the NEC. Attach faceplates to mounting chassis. Barriers (supplied) must be installed when placing line and low voltage devices on the same side of the box.

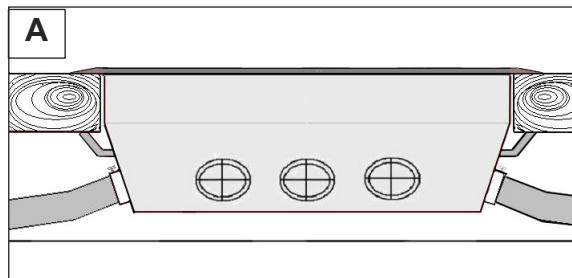


Attach cover to frame/trim. -Place nock at right side into corresponding hole in frame/trim.

- Push left side of lid until left side nock reaches end position.

NOTE: Recessed space on the top of the cover for floor covering inserts.

Adjustable Depth - 3/16" (5 mm) for carpet installation or the supplemental spacers may be removed to increase the depth to 7/16" (11 mm) for other floor thicknesses.



Warning:

To be installed and/or used in accordance with appropriate electrical codes and regulations.



Warning:

To avoid fire, electrical shock and/or electrocution turn power OFF at the circuit breaker before wiring.



Caution:

Wire devices in accordance with the NEC. If you are not sure about existing conductor wires, color coding, polarity and circuit feed contact a licensed electrician.

